

NEK-CAP, INC.

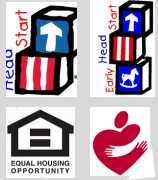
YEAR IN REVIEW

October 1, 2020 through September 30, 2021

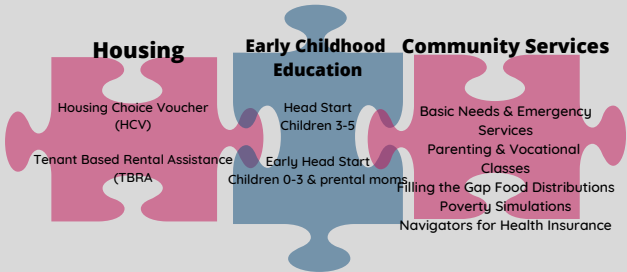
Annual report of community & family impacts through services provided and funds utilized.

Counties Served:

Atchison, Brown, Doniphan, Jackson, Jefferson, Jewell, Leavenworth, Marshall, Mitchell, Nemaha, Osborne, Pottawatomie, Republic, Riley, Smith, Washington



3 Program Focuses to link families with services:



NEK-CAP, Inc. Vision:

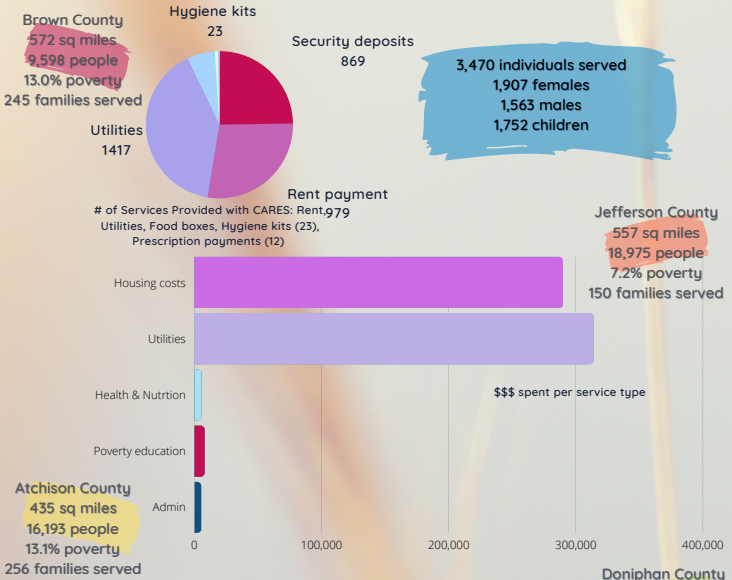
One by one all individuals, families, and communities become self-reliant.

NEK-CAP, Inc. Mission:

We provide comprehensive education and social services to low-income community members through collaborative partnerships focused on promoting the development of individuals and families, empowerment, and economic security.

FAMILY & INDIVIDUAL IMPACTS

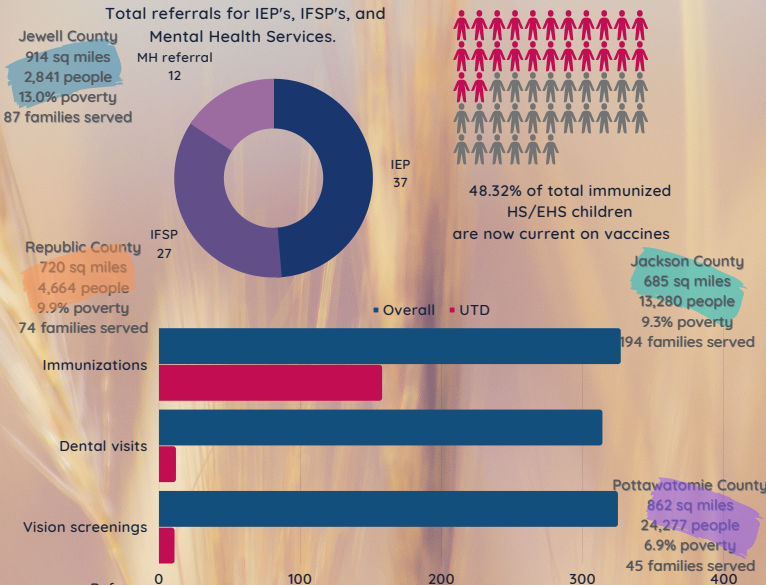
CSBG CARES Expenditures Quick View



Healthy Kids are School Ready

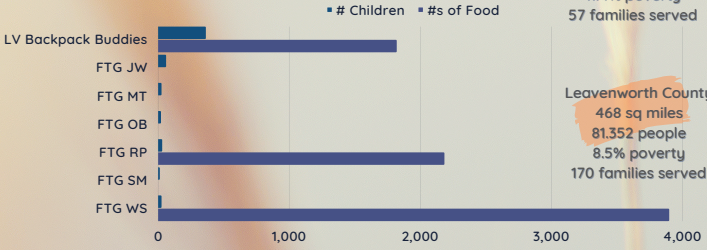
- *327 Head Start & Early Head Start children completed physicals. Of that number, 327 also received immunizations, bringing 158 (48.32%) children to current status.
- *314 children attended dental visits, with 12 children (3.82%) receiving needed dental treatment, ie fillings, etc.
- *325 children received vision screenings, with 11 children (3.38%) receiving treatment such as glasses, etc.

Healthy Impacts to children/families



FAMILY & INDIVIDUAL IMPACTS

Improved Nutrition for Children

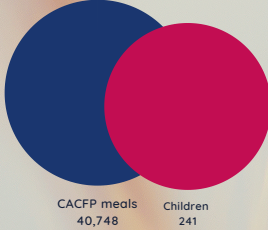


Osborne County
894 sq miles
3,475 people
11.4% poverty
57 families served

Leavenworth County
468 sq miles
81,352 people
8.5% poverty
170 families served

Smith County
897 sq miles
3,603 people
10.3% poverty
32 families served

Mitchell County
719 sq miles
6,150 people
10.0% poverty
54 families served

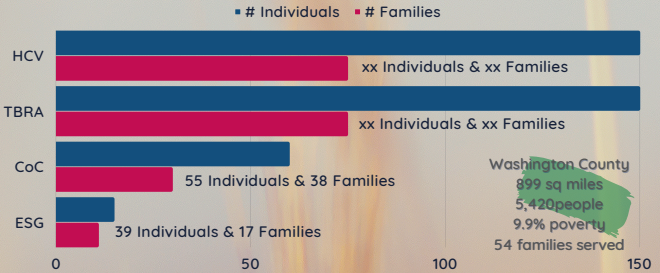


CACFP= Child & Adult Care Food Program.

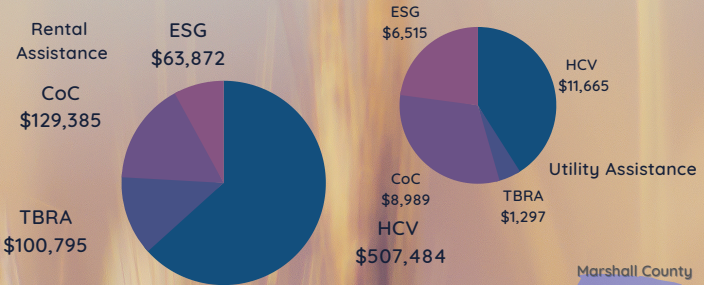
Used to provide healthy meals & snacks to HS/EHS children

Safe, Affordable & Healthy Housing

Housing for families and individuals. All units pass inspections & meet HUD Fair Market Rent requirements



Washington County
999 sq miles
5,420 people
9.9% poverty
54 families served



Nemaha County
719 sq miles
10,155 people
8.3% poverty
73 families served

Marshall County
904 sq miles
9,722 people
8.7% poverty
119 families served

xx FSS Participants saved a total of \$21,235 in Escrow



Riley County
622 sq miles
73,703 people
19.2% poverty
162 families served

AGENCY SUMMARY

Executive Director Note

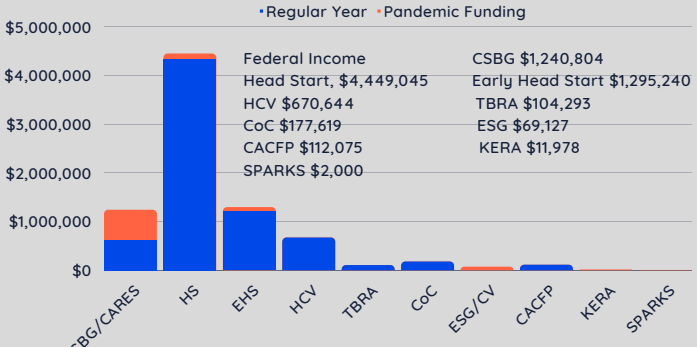
On behalf of the NEK-CAP, Inc., Multi-County Board of Directors and staff, I thank community members and partners for your support during this unprecedented challenging year of the COVID-19 pandemic. I also want to express gratitude to Congress and our funders at Kansas Housing Resources Corporation, the Department of Health and Human Services, and the Department of Housing and Urban Development for COVID-19 related federal resources. Even though staff were hit hard by the pandemic, with the aid of new technology the agency continued to provide much needed services to fellow low-income Kansans in our 16 county service area throughout the year. Staff responded heroically with tremendous flexibility and nimbleness. COVID-19 could not defeat the spirit of NEK-CAP, Inc. We were and will continue to be committed to our mission and to work tirelessly to ensure low-income community members have the opportunity to achieve economic mobility and thrive. If you have questions about this report, please contact me at jcollier@nekcapp.org. I thank you for your interest!

Board of Directors:

James Scherer, President	Eric Noll, Treasurer	Leslie Simmons
Amy Posey, 1st Vice President	Dan Brenner	Ben Romney
Jeanie Wulfkuhle, 2nd Vice President	Sarah Johansen	Vicky Kaaz
Rhonda Mitchell, Secretary	Kylee Powell	Laurie Neeman

Fiscal Matters

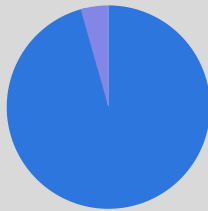
Federally Funded Grants and Programs



Federal Income	CSBG \$1,240,804
Head Start, \$4,449,045	Early Head Start \$1,295,240
HCV \$670,644	TBRA \$104,293
CoC \$177,619	ESG \$69,127
CACFP \$112,075	KERA \$11,978
SPARKS \$2,000	

Private Income

United Ways, Local Grants, & Others \$27,808
Local County Donations \$1,282



Connect with Us!!



Find us on Social Media!



nekcapp1964 Follow ...

52 posts 52 followers 55 following

NEK-CAP, Inc.
NEK-CAP, Inc. is a non-profit organization serving the low-income population in sixteen Northeast/ North Central Kansas Counties.
www.nekcapp.org



nekcapp_inc

NEK_CAP_Inc

Edit profile

9 Following 19 Followers 70 Likes

Community Action agency serving 16 counties in NE and NC Kansas to fight poverty

